

# New Policies & Guidelines for staff & students, returning to school on September 07, 2020.

Since mid-March, we have had to adapt to the Covid-19 Pandemic challenges. Therefore, our Back to School Policies, have been created to accommodate students, whether it will be in-person or a combination of remote learning programs.

**WE ARE PREPARING FOR THE FOLLOWING LEARNING MODELS AND WILL IMPLEMENT BASED ON THE MINISTRY OF EDUCATION AND OTHER GOVERNMENT AUTHORITIES.**

- In-person for face to face traditional instruction.
- Some students receive in-person and some students receive virtual online instruction.
- All students receive virtual online instruction.
- Students receive intermittently virtual online and in-person instruction.

## What Faculty, Staff & Parents can expect, on physically returning for the 2020 - 2021 Fall Semester.

- Students will not be allowed to come to school if they are sick and show signs of Covid-19.
- All persons upon arrival will receive a temperature check and if temperature is elevated those persons will not be allowed to enter the campus.
- If a student's temperature elevates during the day, Immediate Emergency Covid-19 protocol procedures will take place AND a parent/guardian contacted.
- Students 3 years of age and above will be required to wear face shields, older students 12 & above are required to wear face masks.
- Students will be reminded to keep hydrated throughout the day.
- Students are to arrive at school at their scheduled time, whereby temperatures will be immediately taken and they report to their designated classrooms.
- Students are to be collected on time to avoid congregating, unless otherwise authorized by the school.
- Lunch will be served at the students desk.
- Restrictions of movement throughout the day will be limited and monitored.
- We will not allow congregating in large groups.
- Social distancing will be practiced.
- Approved activities will be monitored daily.
- Teachers will rotate to classes and students will stay in small groups of two at a desk.
- Movement in the hallways will travel in one direction.
- Students and teachers will minimize close contact and maintain 6ft of distance whenever possible.

The Ministry of Education & Ministry of Health requires all parents & guardians to monitor the health of their children at home and to avoid bringing a sick child to school, but to seek medical professional assistance. A Doctors letter stating a clean bill of health is required for re-admission into school.



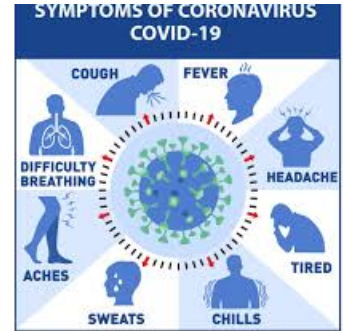
**WE ARE LOOKING FORWARD TO AN AWESOME 2020 - 2021 SCHOOL YEAR.**

*"Education is the most powerful weapon which you can use to change the world." Nelson Mandela*

# BLAKE ACADEMY & BRIDGEWAY NURSERY & PRESCHOOL



## COVID-19 POLICIES & GUIDELINES



HEALTH AND/OR SAFETY CHECKS WILL BE CONDUCTED AS STUDENTS AND STAFF ENTER THE SCHOOL EVERY DAY. THESE INCLUDE PROTOCOLS RELATED TO TEMPERATURE CHECKS BEFORE ENTERING CAMPUS, MASK USAGE, AND SANITATION OF HANDS, CLOTHING, AND MATERIALS.

PARENTS, GUARDIANS, VISITORS AND VENDORS WILL BE LIMITED AND SUBJECT TO HEALTH-CHECK PROTOCOLS SAME AS REQUIRED FOR STUDENTS AND STAFF.

Safety First: the safety of all of our staff, students and parents are of the utmost importance to us. We have planned and executed a number of required safety measures to ensure that all parties remain healthy and safe while on campus.

Students will be required to have a safety hygiene pack. Which should include, hand sanitizers, hand wipes, face shields or mask, and/or disposable gloves.